



HOTEL SAVOY
FLORENCE

SUITE PRESENTER





SUITES



DELUXE SUITE



SPECIAL SUITES



REPUBBLICA SUITE



FORTE SUITES



ARTIST SUITE



DUOMO PRESIDENTIAL SUITE



YOUR ROCCO FORTE SUITE EXPERIENCE

AS A SUITE GUEST

- One-way Mercedes S-Class airport transfer
- In-suite check-in
- Personalised Concierge services during your stay
- In Room Bar with non-alcoholic beverages
- Breakfast in your suite or at Irene
- High-speed Wi-Fi access
- 2 tickets to one of the following city attractions:
 - Gucci Museum
 - Ferragamo
 - Uffizi
 - Officina Profumo Farmaceutica di Santa Maria Novella

AS A SPECIAL SUITE GUEST

- One-way Mercedes S-Class airport transfer
- In-suite check-in
- Personalised Concierge services before and during your stay
- In Room Bar with non-alcoholic beverages
- Breakfast in your suite or at Irene
- High-speed Wi-Fi access
- Unpacking and packing service
- Pressing of up to 4 garments
- 2 tickets to one of the following city attractions:
 - Gucci Museum
 - Ferragamo
 - Uffizi
 - Officina Profumo Farmaceutica di Santa Maria Novella

AS A FORTE SUITE GUEST

- Return Mercedes S-Class airport transfer
- In-suite check-in
- Personalised Concierge services before and during your stay
- Welcome bottle of Franciacorta and seasonal fruits
- Full In Room Bar
- Breakfast in your suite or at Irene
- Unpacking and packing service
- Pressing of up to 4 garments
- High-speed Wi-Fi access
- A personalised experience of your choice:
 - A professional guide for up to 3 hours for a tour
 - A 50 minute body massage for two people
 - An Italian aperitivo in the privacy of your suite
- Discover our Forte Suite Experiences, available upon request & subject to a supplement



SUITES

DELUXE SUITES

Elegant and contemporary, our six Deluxe Suites feature separate living and sleeping areas, each lavishly furnished with pieces that evoke Florence's cultural heritage. The bedroom's arboreally-themed wallpaper and comfortable king-sized bed guarantee ultimate relaxation whilst the Italian marble bathroom offers the perfect pampering spot.

DISCOVER MORE

WATCH VIDEO





SUITES

ROOM SIZE
50m².

OCCUPANCY
2 adults in a supremely comfortable king-sized bed that can be twinned. An extra bed is available upon request. Perfect for families, our Deluxe Suites can be interconnected.

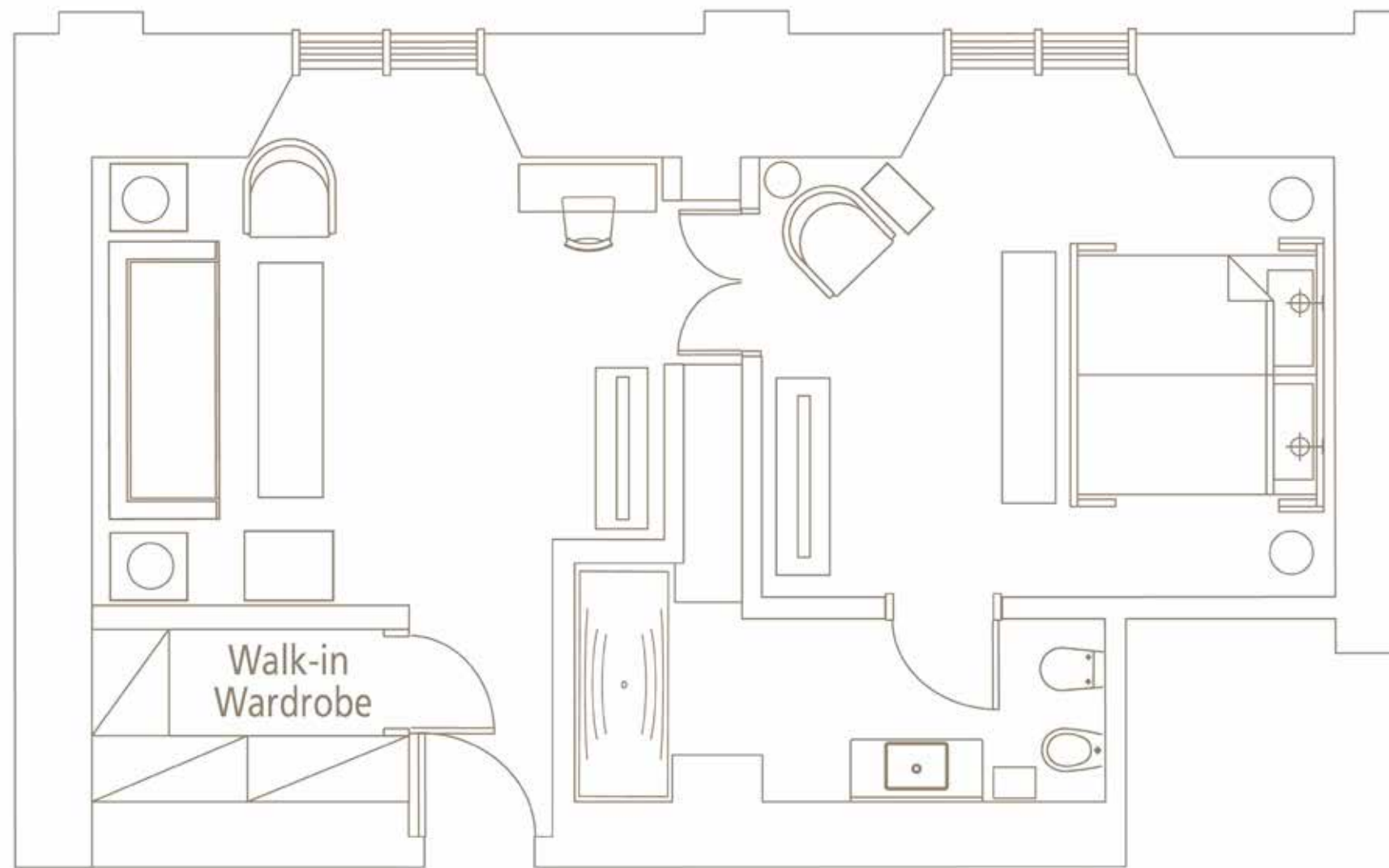
ROOM VIEW
Views of the charming historic centre of Florence.

BATHROOM
The bathrooms are adorned with marble and mosaics, some of which have a bathtub and separate walk-in shower,, others have double washbasins.

Irene Forte Skincare toiletries.
Rocco Forte Hotels bathrobes and slippers.

YOUR SUITE
BENEFITS





ONE OF OUR DELUXE SUITES



SPECIAL SUITES

REPUBBLICA SUITE

Lean over your private balconies and enjoy sweeping views of the magnificent Piazza della Repubblica from the comfort of your own suite. Back inside, the high-ceilinged sitting room oozes Tuscan splendour by blending Florentine heritage and modern interior design in a playful way. The king-sized bed in your lavish bedroom, spacious walk-in wardrobe and Carrara marble bathroom make the Repubblica Suite fit for king or queen.

When connected to a Deluxe Room, our Repubblica Suite becomes a 2-Bedroom Suite.

[DISCOVER MORE](#)



SPECIAL SUITES



ROOM SIZE

70m².

OCCUPANCY

2 adults in a king-sized bed that can be twinned.
An extra bed is available upon request.
4 adults when connected to a Deluxe Room.

ROOM VIEW

Overlooking Piazza della Repubblica.

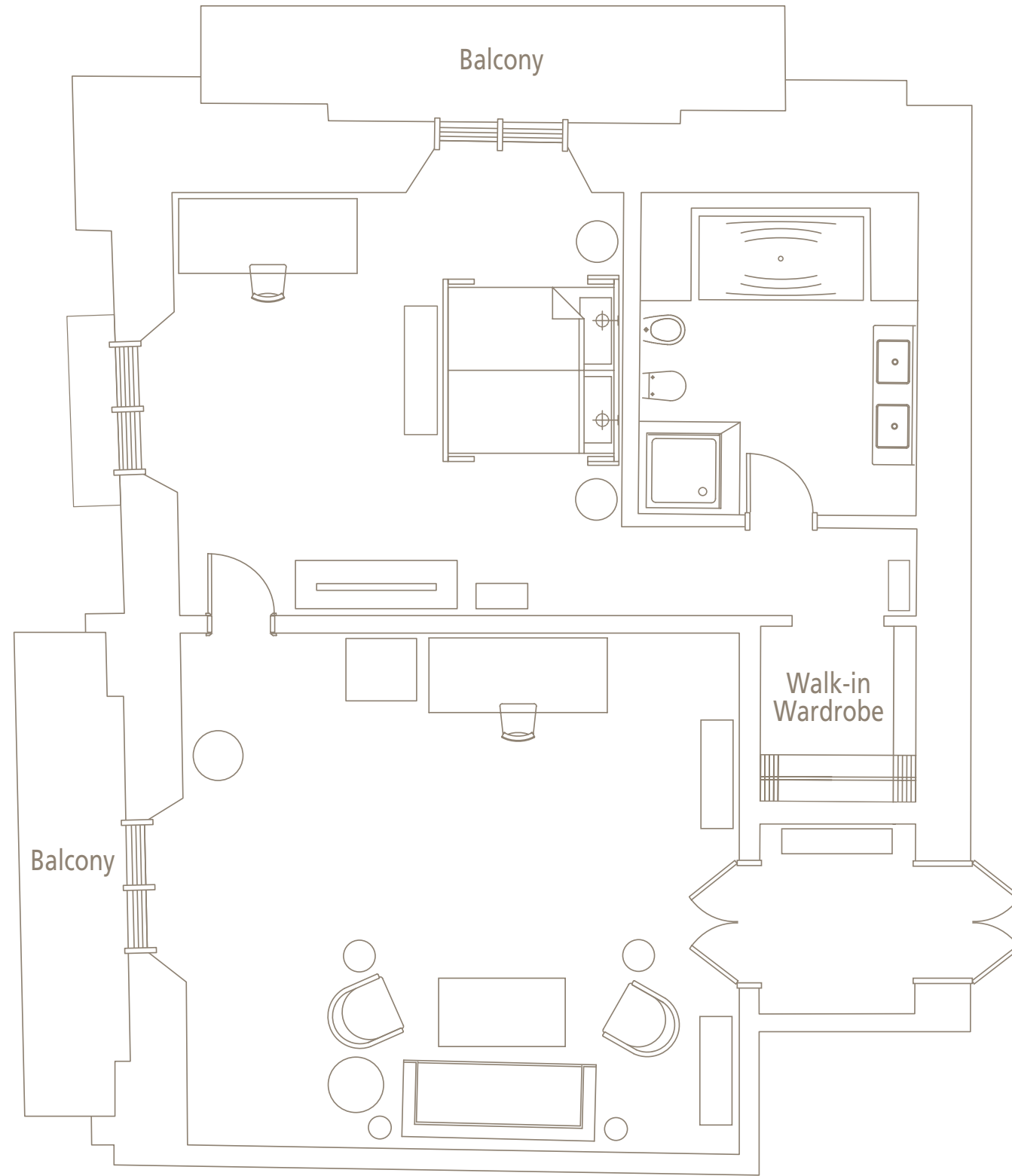
BATHROOM

The Carrara marble and mosaic bathroom has a bathtub, separate walk-in shower, and double washbasins.

Irene Forte Skincare toiletries.
Rocco Forte Hotels bathrobes and slippers.



YOUR SUITE
BENEFITS





FORTE SUITES

ARTIST SUITE

Step through the doors of one of our four Artist Suites and enjoy the view over the historic Piazza della Repubblica. Make yourself at home in your spacious sitting room: pick a book from the floor-to-ceiling bookshelves and run a bath in your marble bathroom before calling it a day in your king-sized bed. If you are in the mood for entertaining, the private dining room and in room bar are ideal to host friends.

When connected to a Junior Deluxe Suite, our Artist Suite becomes a 2-Bedroom Suite.

[DISCOVER MORE](#)

[WATCH VIDEO](#)



FORTE SUITES



ROOM SIZE
105m².

OCCUPANCY

2 adults in a king-sized bed that can be twinned.
An extra bed is available upon request.
4 adults when connected to a Junior Deluxe Suite.

ROOM VIEW

Overlooking Piazza della Repubblica and the historic centre of Florence.

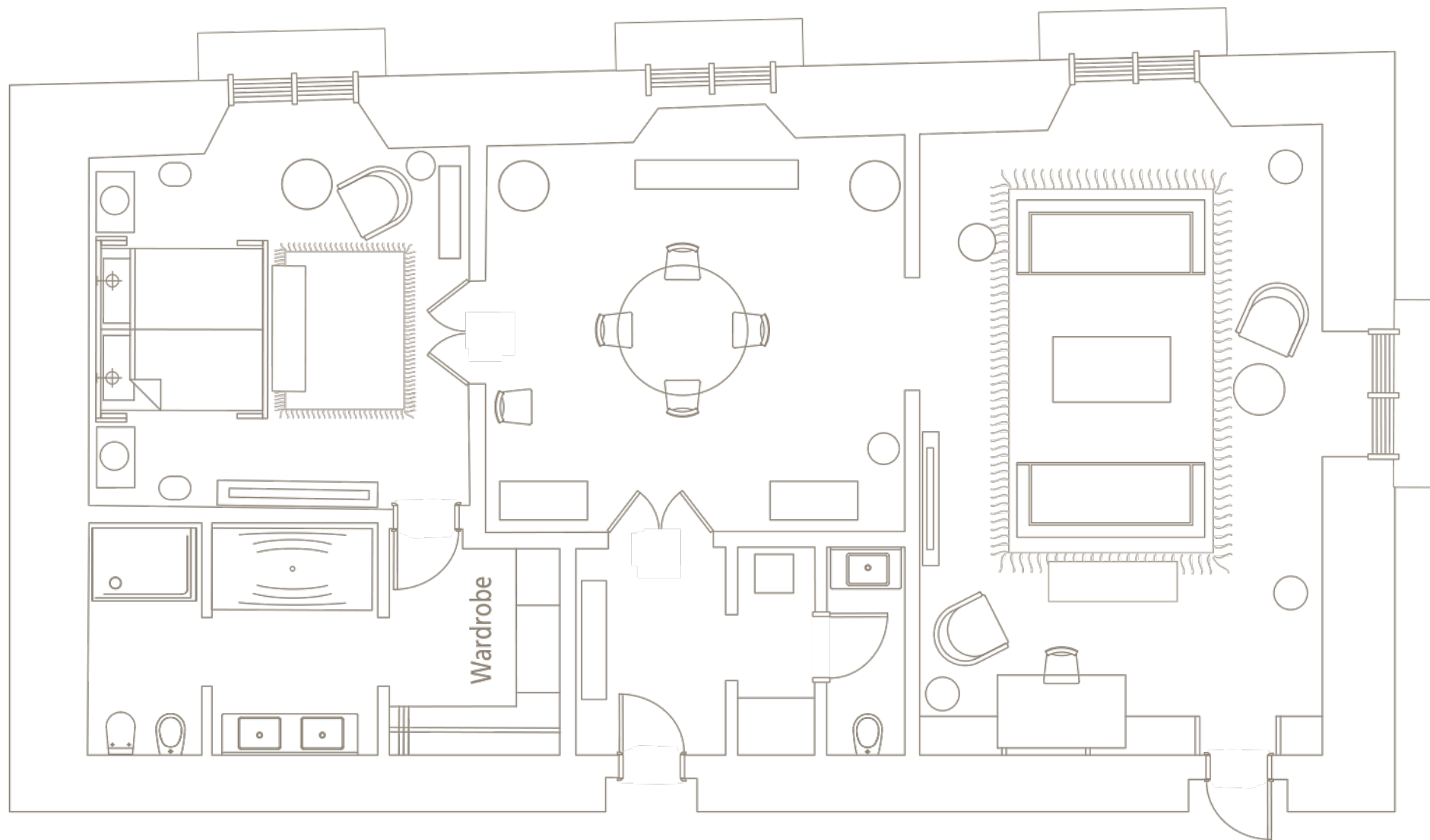
BATHROOM

The Artist Suites have two bathrooms: a spacious master Carrara marble and mosaic bathroom with a bathtub, a separate walk-in shower, and double washbasins; and a separate guest bathroom.

Irene Forte Skincare toiletries.
Rocco Forte Hotels bathrobes and slippers.

YOUR SUITE
BENEFITS





DUOMO PRESIDENTIAL SUITE

Occupying its own wing and featuring two lavish bedrooms, two mosaic-adorned bathrooms, a spacious sitting room and a separate dining room with a private bar, the opulent Duomo Presidential Suite is ideal for families or parties traveling together.

Large windows let natural light flood the stylish space and provide spectacular views of Florence's Duomo whilst the precious objets d'arts, sylvan wallpaper and the handmade blankets of the king-sized bed characterise the suite's sublime design and attention to detail.

When connected to a Premium Room and a Junior Suite, our Duomo Presidential Suite becomes a 3-Bedroom Suite, ideal for families or groups of friends.

[DISCOVER MORE](#)

[WATCH VIDEO](#)





ROOM SIZE
152m².

OCCUPANCY
2 adults in a king-sized bed that can be twinned.
An extra bed is available upon request.
7 adults when connected to a Premium Room and a Junior Suite.

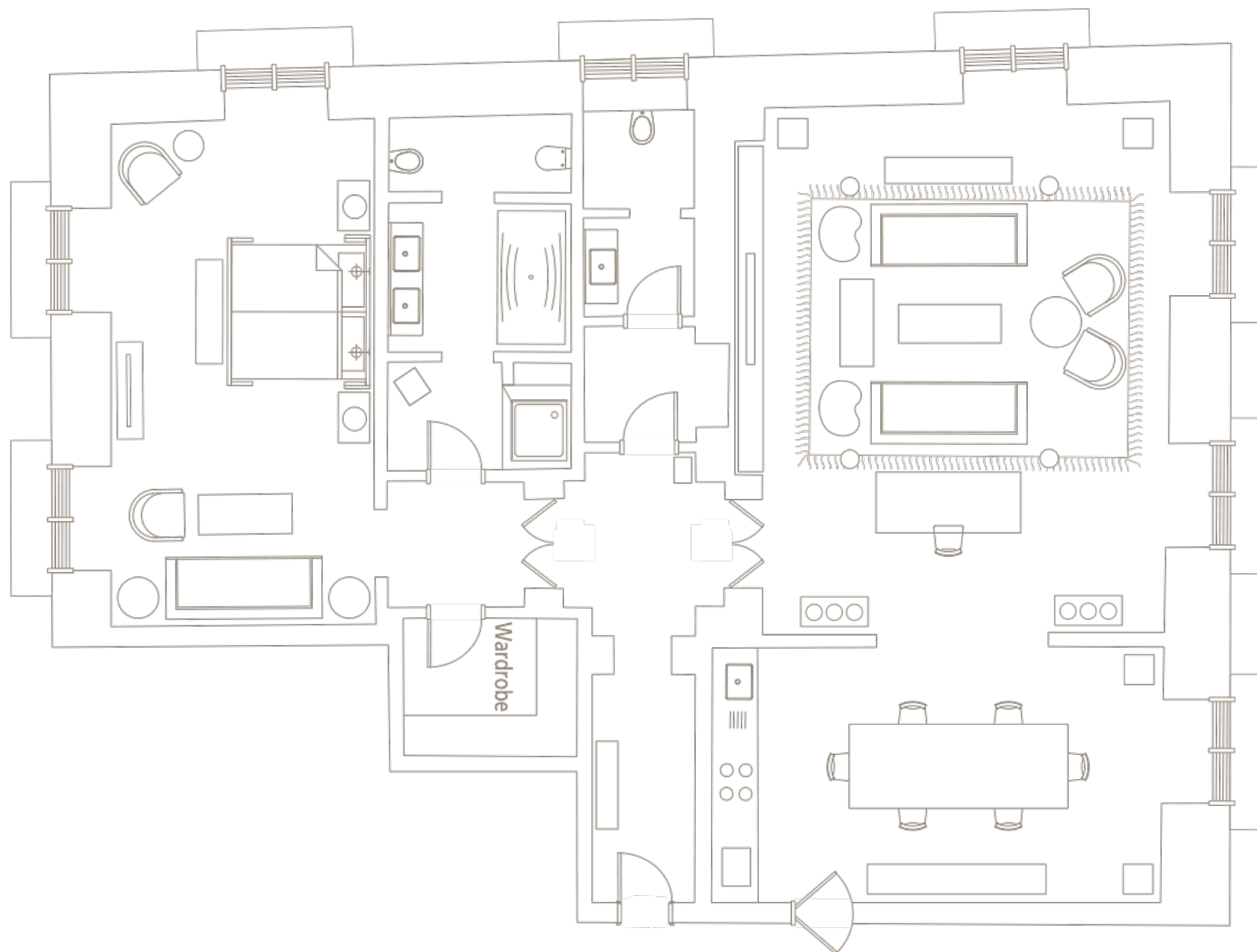
ROOM VIEW
Overlooking the stunning Duomo and the historical city centre.

BATHROOM
The Duomo Presidential Suite has two spacious master Carrara marble and mosaic-adorned bathrooms with bathtubs, a separate walk-in shower, and double washbasins.

Irene Forte Skincare toiletries.
Rocco Forte Hotels bathrobes and slippers.

YOUR SUITE
BENEFITS





DUOMO PRESIDENTIAL SUITE



HOTEL SAVOY

Located on the magnificent Piazza della Repubblica in Florence, mere moments from the majesty of the Duomo, Hotel Savoy is part of the Florentine tradition is an historical palace, offering you an invitation to the historic heart of the city.

During your stay in Florence, enjoy an aperitivo on the outdoor terrace of Irene Bistro, savouring the vibrant Pucci decor and the hum of the city streets. Dive into Fulvio Pierangelini's expertly crafted menu of fine Italian cuisine, using some of the region's best ingredients. And as night falls, sink into splendour in your Olga Polizzi designed room.

IRENE

A celebration of Italian cuisine and regional ingredients, Irene brings Chef Fulvio Pierangelini's authentic dishes to the heart of Tuscany, mere steps from the Renaissance majesty of Florence's famous Duomo.

Glamorous and inviting, Irene's dining room is the ideal place to refresh and recharge during your time in Florence. Taste truffles in all their heady, perfumed glory, a few miles from where they've been foraged. Wind your fork around spaghetti, sublimely tangled with fresh, local tomatoes softened and married with fragrant basil. Indulge in organic beef, or freshly-caught seafood, grilled on Himalayan Salt Stone.



Hotel Savoy

Piazza della Repubblica 7
50123 Florence, Italy
Telephone +39 055 4652165
reservations.savoy@roccofortehotels.com

GDS Chain Code: FC

Accommodation

- 67 rooms
- 12 suites including the 152m² Duomo Presidential Suite, 4 Artist Suites
- Many bedrooms have views of the Piazza or the nearby Duomo

Restaurant and bars

- Irene. Florentine bistro with seasonal menus by celebrated Chef Fulvio Pierangelini, accompanied by a list of the best Italian wines, many from local vineyards
- Cocktails are served with appetisers in the lively bar

Fitness and Spa

- Fully equipped gym
- Spa Suite

Meetings and events

- 1 event room for up to 50 delegates

Location

- Located on Piazza della Repubblica
- 20 min drive from Florence Airport (FLR)
- 1 hour drive from Pisa Airport (PSA)
- 15 min walk from Santa Maria Novella train station; Rome is 1.5 hours from Florence by train





ROCCO FORTE HOTELS

HOTEL DE ROME
BERLIN

HOTEL AMIGO
BRUSSELS

THE BALMORAL
EDINBURGH

HOTEL SAVOY
FLORENCE

BROWN'S HOTEL
LONDON

THE CHARLES HOTEL
MUNICH

MASSERIA TORRE MAIZZA
PUGLIA

HOTEL DE LA VILLE
ROME

HOTEL DE RUSSIE
ROME

ROCCO FORTE HOUSE
ROME

VILLA IGIEA
PALERMO

ROCCO FORTE
PRIVATE VILLAS
SICILY

VERDURA RESORT
SICILY

HOTEL ASTORIA
ST PETERSBURG

FUTURE OPENINGS:

ROCCO FORTE HOUSE
MILAN

THE CARLTON
MILAN

COSTA SMERALDA
SARDINIA